



**SAP Litmos** 

# **SAP Litmos solutions Road Map**

March 2021

PUBLIC

# Legal disclaimer

The information in this presentation is confidential and proprietary to SAP and may not be disclosed without the permission of SAP. This presentation is not subject to your license agreement or any other service or subscription agreement with SAP. SAP has no obligation to pursue any course of business outlined in this document or any related presentation, or to develop or release any functionality mentioned therein. This document, or any related presentation, and SAP's strategy and possible future developments, products, and platforms, directions, and functionality are all subject to change and may be changed by SAP at any time for any reason without notice. The information in this document is not a commitment, promise, or legal obligation to deliver any material, code, or functionality. This document is provided without a warranty of any kind, either express or implied, including but not limited to the implied warranties of merchantability, fitness for a particular purpose, or noninfringement. This document is for informational purposes and may not be incorporated into a contract. SAP assumes no responsibility for errors or omissions in this document, except if such damages were caused by SAP's willful misconduct or gross negligence.

All forward-looking statements are subject to various risks and uncertainties that could cause actual results to differ materially from expectations. Readers are cautioned not to place undue reliance on these forward-looking statements, which speak only as of their dates, and they should not be relied upon in making purchasing decisions.

For all recent and planned innovations, potential data protection and privacy features include simplified deletion of personal data, reporting of personal data to an identified data subject, restricted access to personal data, masking of personal data, read access logging to special categories of personal data, change logging of personal data, and consent management mechanisms.

# About SAP road maps

Companies today are planning their digital journeys – transforming business models, reengineering business processes, and reimagining work.

**SAP road maps** highlight innovations that may help you plan and implement your digital journey. They span products relevant to lines of business in your industry and explain how our innovations may add value to your business.

In our road maps, you can learn about our innovations along four different timelines:

1. **Recent innovations** for our products that have been launched in the past weeks or months and can already be purchased
2. **Planned innovations** for our products that are intended to be launched in the short term or midterm
3. **Product direction**, providing a long-term perspective on high-level development plans for innovations for our solutions – inspired by your requirements
4. **Product vision**, providing a high-level and long-term business perspective on innovations for our products

# Table of contents

## 01 Topic overview

- SAP Litmos solutions – Training in the Now

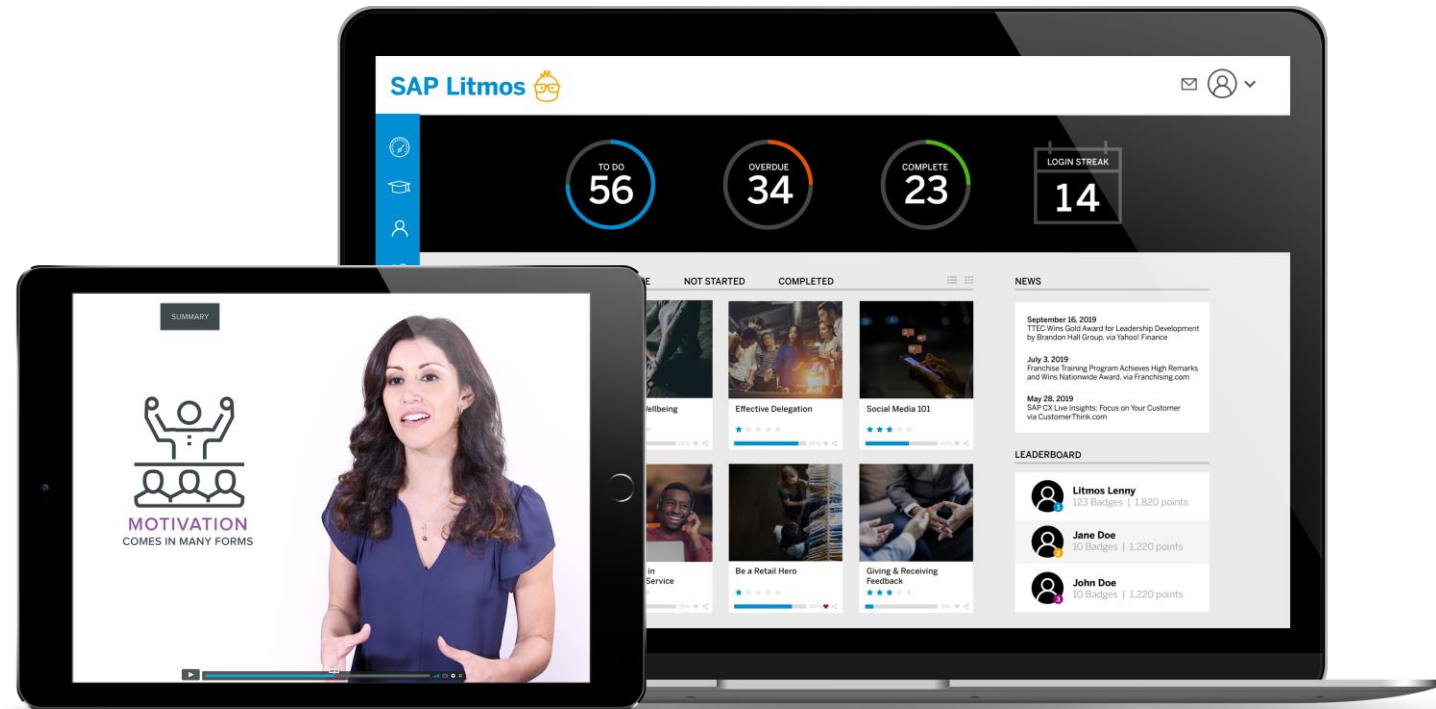
## 02 Topic road map

- Recent innovations
- Planned innovations

# SAP Litmos solutions

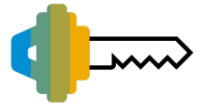
## Training in the Now

SAP Litmos solutions combine a powerful LMS, **SAP Litmos Training**, with a robust course library, **SAP Litmos Training Content**. It enables targeted learning, boosts employee experience and loyalty, and protects the brand by keeping the organization compliant.



# SAP Litmos Training

Anyone, Anywhere,



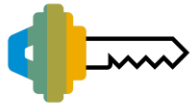
## Key Capabilities

- Simple integration & quick deployment
- Fast user onboarding
- Epic engagement & adoption
- Easy course creation & off-the-shelf content
- Rapid automation & embedded AI
- Robust analytics & reporting
- Bulletproof security & quick scalability



# SAP Litmos Training Content

1600+ video based courses



## Key Capabilities

- ✓ Personal development
- ✓ Health & wellbeing
- ✓ Marketing
- ✓ Customer service
- ✓ Finance skills
- ✓ Communication & social skills
- ✓ Human resources
- ✓ Leadership & management
- ✓ Project management
- ✓ Policy & compliance
- ✓ Retail
- ✓ Sales mastery
- ✓ Conflict management
- ✓ Care certificate
- ✓ I.T. Skills
- ✓ Food Hygiene
- ✓ Housing
- ✓ FCA compliance
- ✓ Toolbox talks
- ✓ Health & safety



# SAP Litmos Training Content

## Product road map overview – Key innovations

### V2102 Recent innovations Q1/2021

#### SAP Litmos Training Content

- Brexit – What it Means for My Business
- Interview Skills Remastered
- Driving Changes in Hospitality
- Customer First Thinking
- Focusing on Customer Experience
- Californian COVID Safety at Work
- Cognitive Functions Suite
- Sustainability Suite
- Prospecting
- Updates: Health and Safety (U.S.)
- Update: Transgender Protection in the Workplace (U.S.)
- Healthcare updates: HIPAA

### V2105 Recent innovations Q2/2021

#### SAP Litmos Training Content

- Effective Interviewing Series
- Best Email Practices
- Leadership Skills – improving teams and individuals
- Project Management Skills
- Sexual Harassment Prevention, for U.S. states (+ Spanish translations)
  - District of Columbia
  - Connecticut
  - Delaware
  - Illinois
  - Maine
- Antitrust (U.S.)
- Healthcare Refresh
- ANZ Compliance – new topics
- Updates: GDPR post-Brexit

### V2108 Planned Q3/2021<sup>1</sup>

#### SAP Litmos Training Content

- Culture Series
  - Workplace Bullying
  - Anti-discrimination
  - Fraud
  - Whistleblowing
  - Conflicts of Interest
- Mentoring Series
- Creativity in Business Collection
- Women's Health at Work
- Sustaining a Winning Culture
- Listening
- Communication Skills
- Trade Sanctions
- Updates: Information Security and Data Privacy Collection
- Health Care Updates
  - Patient Safety
  - Advance Directives for End of Life Decision Making

### V2111 Future Q4/2021<sup>1</sup>

#### SAP Litmos Training Content

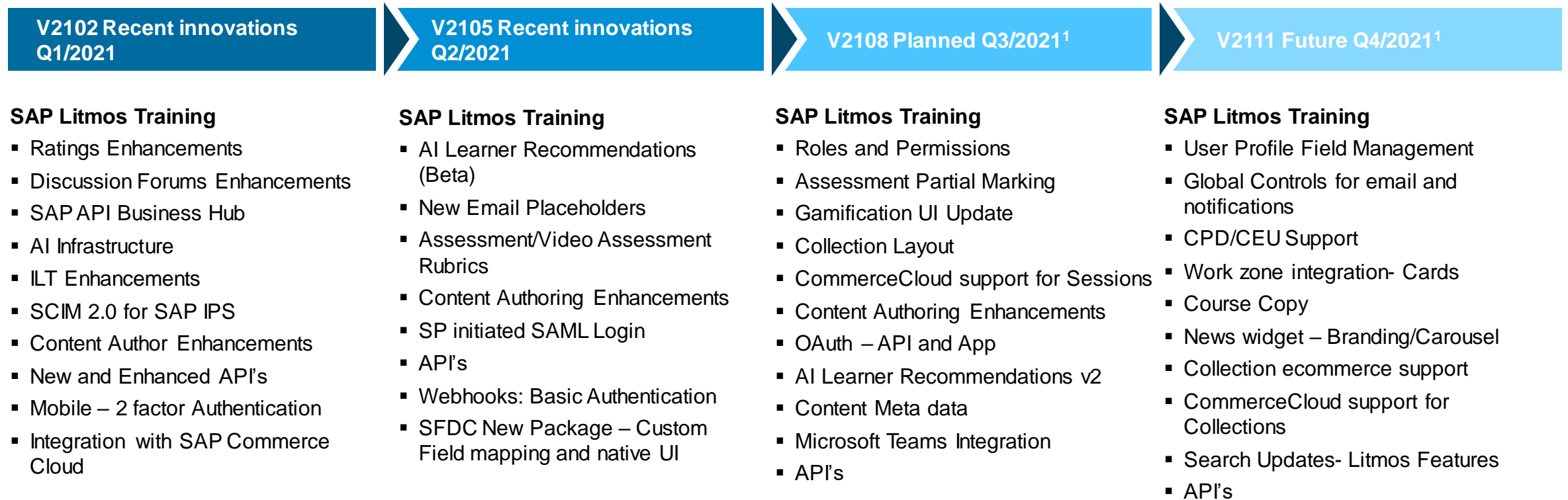
- Revised Translation Suite: "Leading Learning"
- Millennial Leadership suite
- Create Value in Negotiations
- Tackling Time
- Remain Focussed on Solutions, Not Barriers
- Healthcare refresh
- Habits of Highly Effective People Episodes
- Bloomberg New Releases

1. This is the current state of planning and may be changed by SAP at any time without notice.



# SAP Litmos Training

## Product road map overview – Key innovations



1. This is the current state of planning and may be changed by SAP at any time without notice.

# **SAP Litmos Training**

## **Recent Innovations Q1 2021**



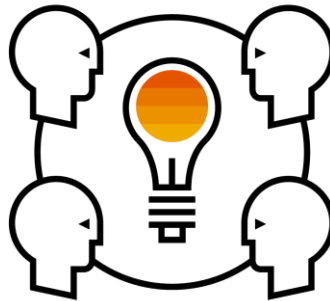
# SAP Litmos Training

## Ratings Enhancements

### Key Capabilities



Updated view of ratings



Admins can respond to ratings submitted by learners.



New notification for ratings submissions

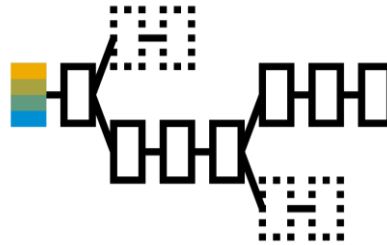
# SAP Litmos Training

## Discussion Forums Enhancements

### Key Capabilities



Upload files of different types such as Word, Power Point, Images



New WYSIWYG editor for posts



Updated Discussions UI

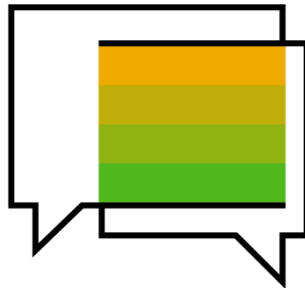
# SAP Litmos Training

## SAP API Business Hub

### Key Capabilities



The [SAP API Business Hub](#) is a web app hosted by SAP to discover, explore, and test SAP product APIs (application programming interfaces) that are used build extensions or process integrations.



- Simple API discovery & exploration
- Community collaboration
- Sandbox API testing
- Streamlined development

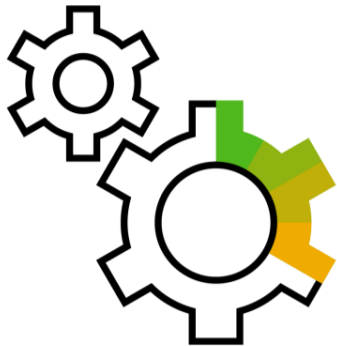


All API's which are called by SAP Cloud Platform Integration Suite "iFlows" must be published to SAP API Business Hub.

# SAP Litmos Training

## ILT Enhancements

### Key Capabilities



Instructor Approval Flow:  
Approve ILT sessions via  
instructor page



Conflict checking and  
reporting updates



ILT waitlist enhancements



# SAP Litmos Training

## SCIM 2.0 for SAP IPS

### Key Capabilities



Automates identity lifecycle processes. Automatically provision users and groups to SAP Litmos Training using SAP Identity Provisioning Service (IPS). IPS is integrated with SSO and governance micro-services.



- Provision and deprovision user identities to SAP Litmos Training.
- Set provisioning schedule frequency based on corporate requirements.
- Perform policy-based authorization management.

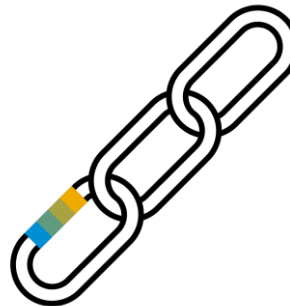
# SAP Litmos Training

## Content Author Enhancements

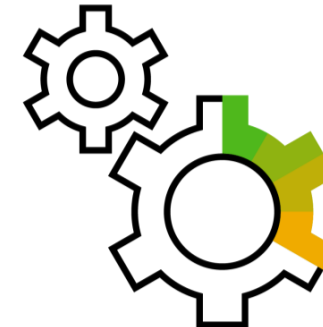
### Key Capabilities



New question types: Click to match and True/False



Link Button: Link to module pages/URLs



New Quiz Option- Resit incorrect questions only

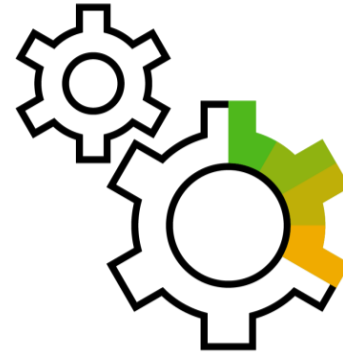
# SAP Litmos Training

## New and Enhanced API's

### Key Capabilities



New API's will be available for customers and partners to view on the Litmos Help Desk & the SAP API Business Hub.



### New API's:

- Add content into Collections.
- New API's to delete records.
- New details API's.

# SAP Litmos Training

## Mobile App – 2 factor Authentication

### Key Capabilities



Two factor Authentication on native mobile app : Email based

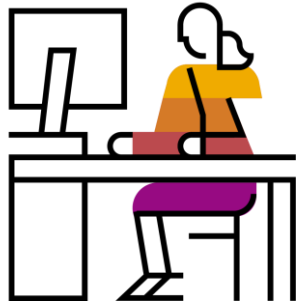


Two factor Authentication on native mobile app : Mobile and Google Authenticator based

# SAP Litmos Training

## Integration with SAP CommerceCloud

### Key Capabilities



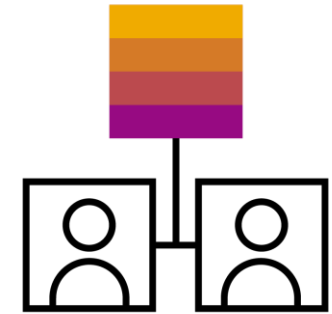
#### Integration:

Establish connection between Litmos and Commerce Cloud Instance including catalog  
Litmos will sync with



#### Course Push:

Courses flagged as wanting to sell in Litmos, pushed to Commerce Cloud instance as products on an hourly basis



#### Order Pull:

Confirmed Commerce Cloud orders will be pulled at a set timeframe, assigning the purchaser to the Litmos courses purchased

# **SAP Litmos Training**

## **Planned Innovations Q2 2021**





# SAP Litmos Training

## AI Learner Recommendations (Beta)

### Key Capabilities



Recommend content to learners using advanced AI technology.

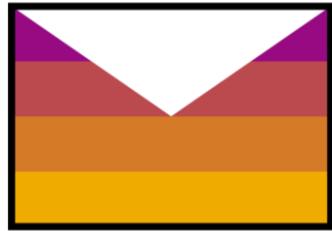


Recommends content to learners based on their unique history, adapting and changing with the learner's behavior.

# SAP Litmos Training

## New Placeholders for emails

### Key Capabilities



Extend use of email placeholders to work  
in email subject lines



- Deep links for courses within the due date reminder emails.
- Course custom fields for use within course related email templates.

# SAP Litmos Training

## Assessment / Video Assessment Rubrics

### Key Capabilities



Upload Marking Guides or Rubrics for free text or video assessment questions



View Marking Guides when Reviewing learner responses

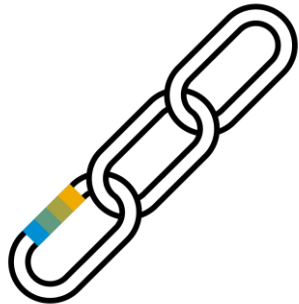


Supports Admins marking learners with timely information

# SAP Litmos Training

## Content Author Enhancements

### Key Capabilities



Embed video within Content Author modules:

Vimeo, YouTube or custom embeds



New Question Types:

- Fill In the Blank
- Sequence



Inserting/editing tables in text

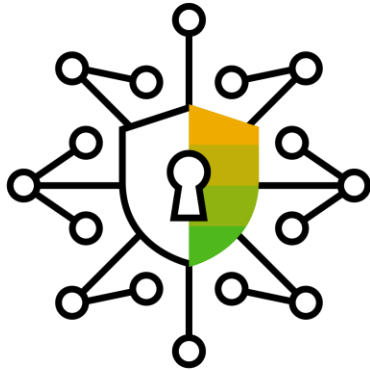
Grid Reveal

- Content is revealed on click

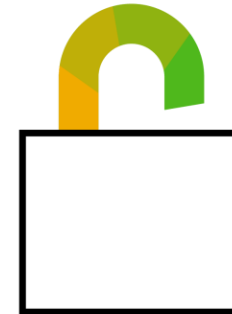
# SAP Litmos Training

## Webhooks: Basic Authentication

### Key Capabilities



We currently support SHA-256 signing secret keys that can be used to pass webhook event data to HTTPS destinations.

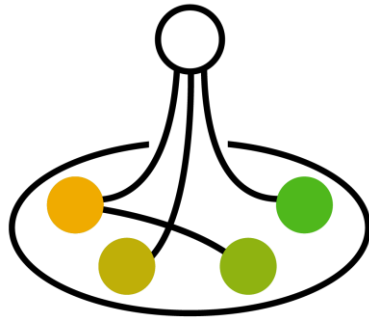


We will now support Basic Authentication (username / password) to be passed with the webhook event data. Customers can ensure the event data is passed to a secure HTTPS destination. This is typically used for testing and easy integration.

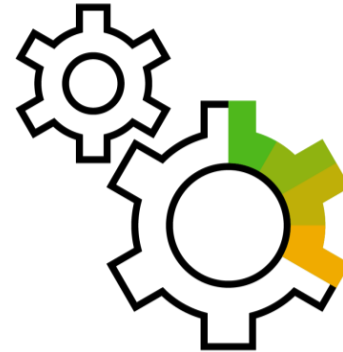
# SAP Litmos Training

## New and Enhanced API's

### Key Capabilities



New API's are being introduced to ensure the system is more extensible and flexible for application integrations.



A few exciting API's include:

- API to register a list of users to a session
- API to import/update/fetch AICC modules
- API to fetch a list of users who received an error in a user bulk import



# SAP Litmos Training

## SP initiated SAML Login

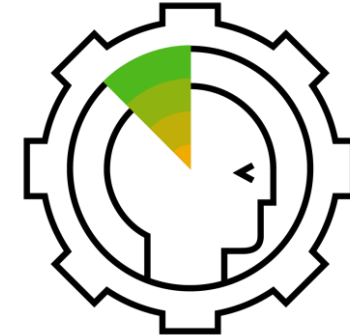
### Key Capabilities



Service Provider Initiated Login is a SAML SSO flow. This flow enables organizations to redirect users from SAP Litmos to an identity provider for authentication.



Once the user is authenticated at the identity provider, the user is redirected back to Litmos for seamless single-sign on.

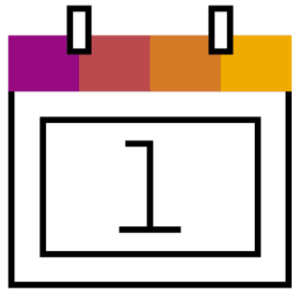


This differs from the standard flow, called Identity Provider Initiated Login

# SAP Litmos Training

## SFDC New Managed Package

### Key Capabilities



#### Custom Field Mapping

Map user record and contact record fields to Litmos user record fields. These fields will be updated on user record creation and user record updates.



#### Litmos Assign

These field values can be used with Litmos Assignment Engine rules or queried in the Litmos Reporting Engine Reports.



#### Reporting

These field values can be displayed on the user records that are queried by the Quick Reports and the Reporting Engine Reports.

# **SAP Litmos Training**

## **Planned Innovations Q3 2021**



# SAP Litmos Training

## Roles and Permissions

### Key Capabilities



Add option to selected features to open them up to Administrators as well as Account owners.



- Extend Roles and permissions
- Create new roles
- Select permissions for new role

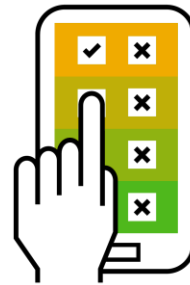
# SAP Litmos Training

## Assessment Partial Marking

### Key Capabilities



Support partial marking for free text questions



A free text question can be given a mark up to the total weighted value for that question.

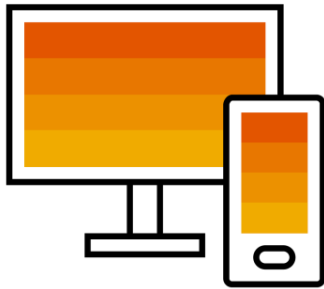


So for example, a question may have a weighted value of 5 and a learner can be given a mark of 3.

# SAP Litmos Training

## Gamification UI Update

### Key Capabilities



New Learner UI for Badges  
and Points Earned



View Levels Earned



Updated Leaderboard



# SAP Litmos Training

## Collections – Layout Enhancements

### Key Capabilities



Ability to extend or modify the look of the Collections detail section for the Student View



This would include a page that allows for HTML to be included

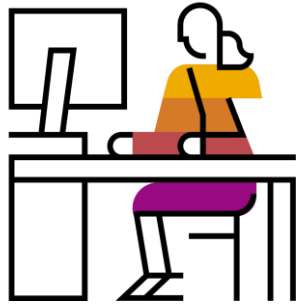


Provides a vast amount of flexibility in this area.

# SAP Litmos Training

## Sync ILT / vILT with SAP CommerceCloud

### Key Capabilities



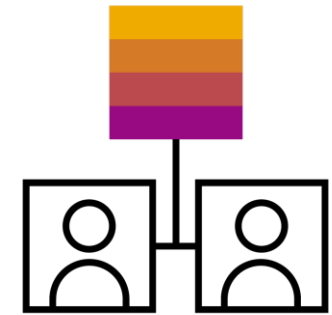
#### Integration:

Update connection between Litmos and Commerce Cloud Instance to sync ILT and vILT sessions



#### Session Push:

Courses with sessions flagged as wanting to sell in Litmos, pushed to Commerce Cloud instance as products on an hourly basis



#### Order Pull:

Confirmed Commerce Cloud orders will be pulled at a set timeframe, assigning the purchaser to the Litmos sessions purchased

# SAP Litmos Training

## Content Author Enhancements

### Key Capabilities



New question types including:

- Drag and drop
- Hotspot
- Flip Cards

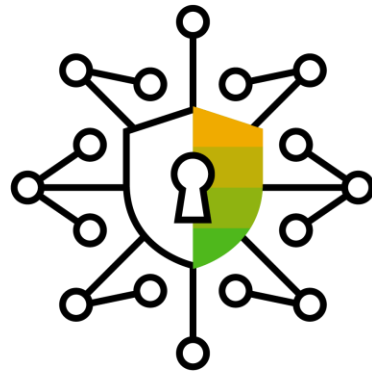


New template functionality will allow content authors to create and save templates for reuse across modules.

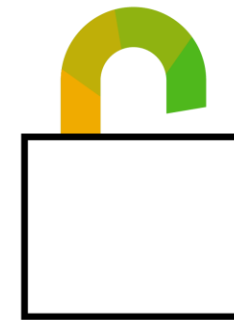
# SAP Litmos Training

## OAuth – API and App

### Key Capabilities



Litmos APIs will have new authentication which adheres to OAuth 2.0 protocol



Requires the following for access to client resources:

- Client credentials
- Access token
- Refresh token

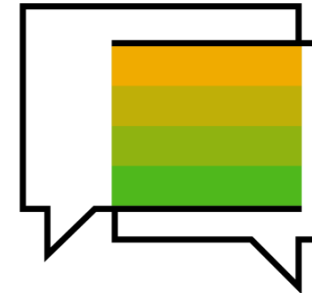
# SAP Litmos Training

## AI Learner Recommendations V2

### Key Capabilities



Extension to the AI Recommendations feature will allow learner filtering of recommendations and recommendation preferences.



Boosting and promotion of content to learners, particularly for new courses will enable Administrators to showcase content of their preference.

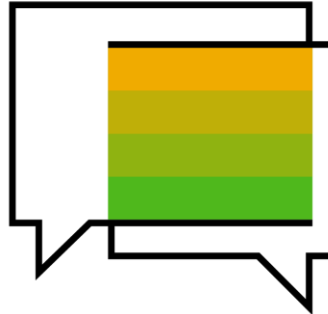
# SAP Litmos Training

## Microsoft Teams Integration

### Key Capabilities



Instructors and Admins can connect their Teams user profile to their Litmos user profile for vILT session synchronization.



Instructors and Admins can create sessions and choose Microsoft Teams as the web-conference host.



Track participants from Team meetings into Litmos vILT sessions roll call.

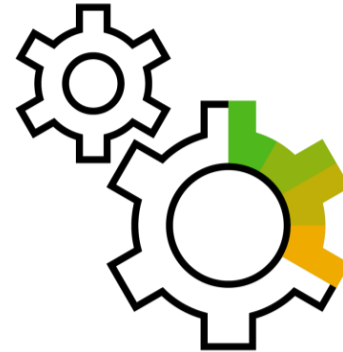
# SAP Litmos Training

## New and Enhanced API's

### Key Capabilities



New API's will be available for customers and partners to view on the Litmos Help Desk & the SAP API Business Hub.



### New API's:

- Add content into Collections.
- New API's to delete records.
- New details API's.

# **SAP Litmos Training**

## **Planned Innovations Q4 2021**





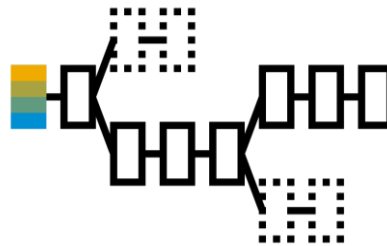
# SAP Litmos Training

## User Profile – Field Management

### Key Capabilities



There is a growing demand for the Ability to manage ( hide and/or disable) individual user profile fields by an Admin.



This is also seen as a security and privacy need.

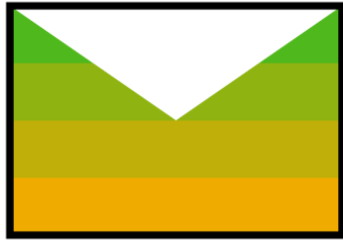


- Manage default profile fields individually
- Manage the legacy custom fields individually

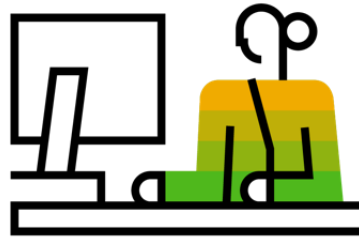
# SAP Litmos Training

## Global Controls for Email and Notifications

### Key Capabilities



Courses and Email settings are at the course level. Doesn't allow for global defaults. This can be very tedious especially when email templates need to be changed for every course type.



Ability to set global defaults and override at the course level



Also provides a global view as to what is set and what emails are scheduled to be sent

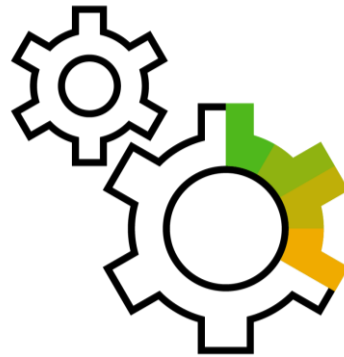
# SAP Litmos Training

## CPD/CEU Support

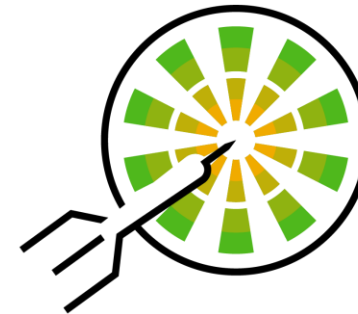
### Key Capabilities



Learner Reporting on  
CPD/CPE hours/points



Configure CPD/CPE Periods



Setup Points and Categories for  
Completed Courses/LPs/Modules

# SAP Litmos Training

## WorkZone - Cards

### Key Capabilities



Create and publish new cards for  
SAP WorkZone



Exposing unique Litmos data in  
each card

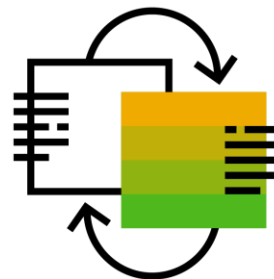
# SAP Litmos Training

## Course Copy

### Key Capabilities



Simple way to copy a course and its components



Copy the course as well as attached modules, boosts, Proficient instructors, Additional references, and settings

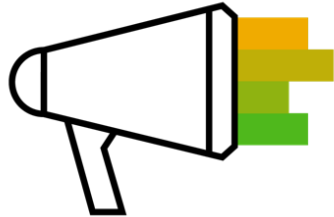


It will not copy People assignments, team assignments, noticeboard, ratings, and history

# SAP Litmos Training

## News- Brand Filtering and Carousel

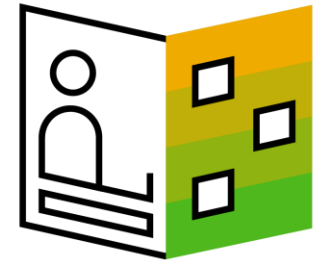
### Key Capabilities



Connect branding to a News widget



Support multiple News widgets



Provide a carousel display

# SAP Litmos Training

## Collections - eCommerce

### Key Capabilities



Allow for a price and currency to be set for each Listing



Sync Collections/Listings to Shopify

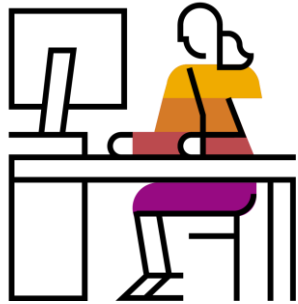


Access control within Litmos

# SAP Litmos Training

## Sync Collections with SAP CommerceCloud

### Key Capabilities



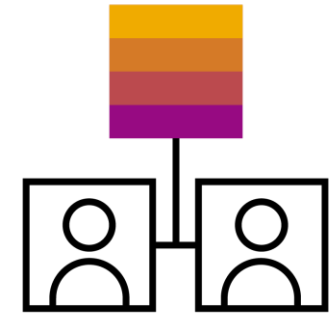
#### Integration:

Establish connection between Litmos and Commerce Cloud Instance including catalog  
Litmos will sync with



#### Course Push:

Courses flagged as wanting to sell in Litmos, pushed to Commerce Cloud instance as products on an hourly basis



#### Order Pull:

Confirmed Commerce Cloud orders will be pulled at a set timeframe, assigning the purchaser to the Litmos Collection purchased



# SAP Litmos Training

## Search Updates- Litmos Features

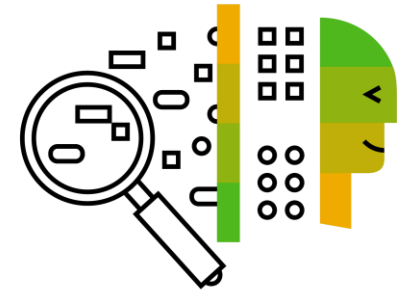
### Key Capabilities



Search and Alphabetize the lists where applicable



For Brands, Tags, and Topics in Feature



Ability to do basic search on Feature pages

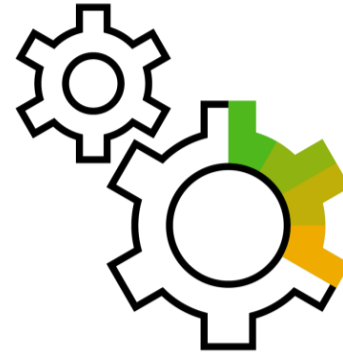
# SAP Litmos Training

## New and Enhanced API's and Webhooks

### Key Capabilities



- New Webhooks for Collections and Teams



### New API's:

- New API's to manage skills and competencies
- New API's for date range delta queries

# Thank you

Follow us



[www.sap.com/contactsap](http://www.sap.com/contactsap)

xxxxxenUS (YY/MM)

© 2019 SAP SE or an SAP affiliate company. All rights reserved.

No part of this publication may be reproduced or transmitted in any form or for any purpose without the express permission of SAP SE or an SAP affiliate company.

The information contained herein may be changed without prior notice. Some software products marketed by SAP SE and its distributors contain proprietary software components of other software vendors. National product specifications may vary.

These materials are provided by SAP SE or an SAP affiliate company for informational purposes only, without representation or warranty of any kind, and SAP or its affiliated companies shall not be liable for errors or omissions with respect to the materials. The only warranties for SAP or SAP affiliate company products and services are those that are set forth in the express warranty statements accompanying such products and services, if any. Nothing herein should be construed as constituting an additional warranty.

In particular, SAP SE or its affiliated companies have no obligation to pursue any course of business outlined in this document or any related presentation, or to develop or release any functionality mentioned therein. This document, or any related presentation, and SAP SE's or its affiliated companies' strategy and possible future developments, products, and/or platforms, directions, and functionality are all subject to change and may be changed by SAP SE or its affiliated companies at any time for any reason without notice. The information in this document is not a commitment, promise, or legal obligation to deliver any material, code, or functionality. All forward-looking statements are subject to various risks and uncertainties that could cause actual results to differ materially from expectations. Readers are cautioned not to place undue reliance on these forward-looking statements, and they should not be relied upon in making purchasing decisions.

SAP and other SAP products and services mentioned herein as well as their respective logos are trademarks or registered trademarks of SAP SE (or an SAP affiliate company) in Germany and other countries. All other product and service names mentioned are the trademarks of their respective companies.

See [www.sap.com/copyright](http://www.sap.com/copyright) for additional trademark information and notices.